



SUPREME

TEST INSTRUMENT BULLETIN



Our 27th Year

Greenwood, Mississippi, U.S.A.

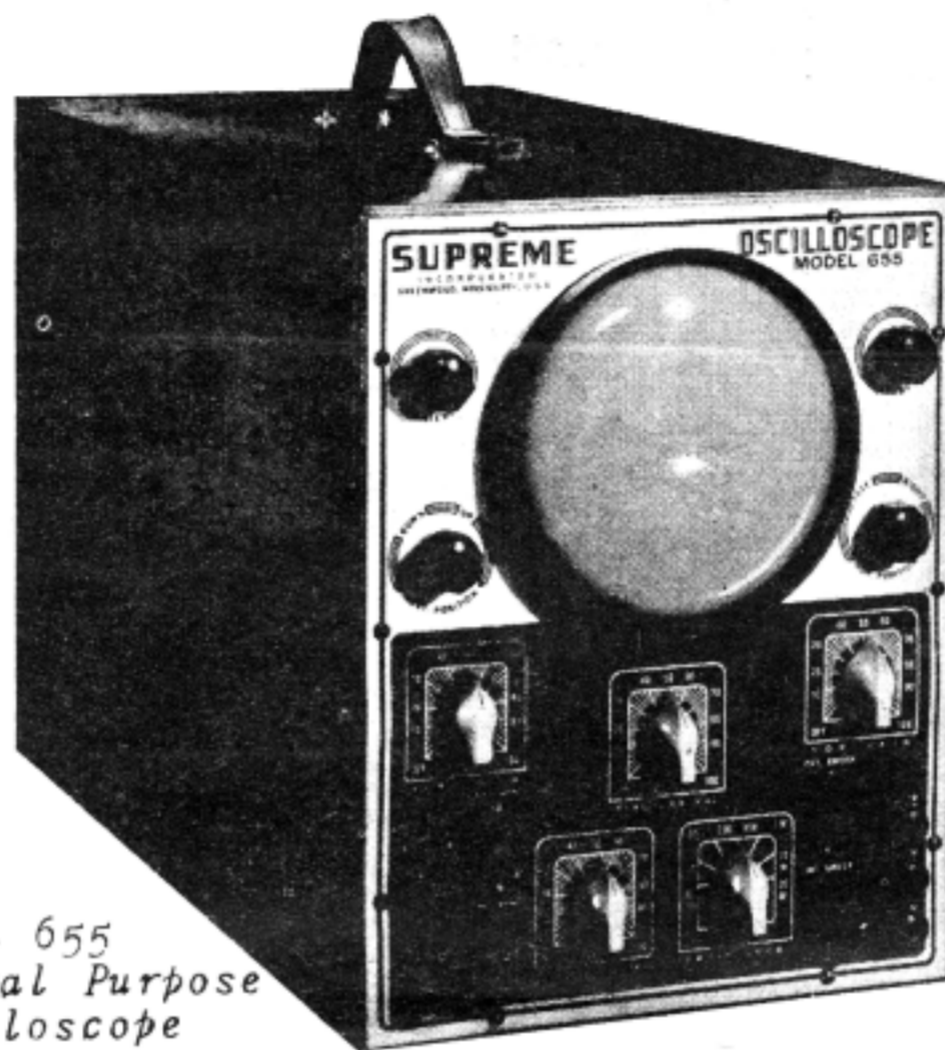
Third Quarter 1954

NEW VERSIONS OF OLD TYPES

Through the cooperation of tube manufacturers who supply us with data and samples of new types, we are able to provide you with up-to-date settings for a particular type before it becomes generally available.

Tube manufacturers have recently introduced a lot of new types. Some of these are special tubes which were designed for some particular application such as a special color TV circuit; others are slightly changed versions of existing types. Most of the latter group will use the same settings on your Supreme tube tester as their prototype. Typical examples are the 5U4-GA, 6BQ6-GA and 12BQ6-GA.

A number of new types have been made available for 600 ma series string operation. Except for the filament, their characteristics are identical to some existing type. You will probably recognize the prototypes of the following: 3AL5, 3AU6, 3BE6, 3CB6, 4BQ7-A, 4BZ7, 5J6 and 5U8.



Model 655 General Purpose Oscilloscope

KNOW YOUR 'SCOPE

Specifications Key To Performance

Oscilloscopes are designed for certain applications, and a thorough knowledge of what to expect from your scope is very important if you are to get the maximum use from it.

The general purpose scope, such as the Supreme Model 655, was designed primarily for audio and lower i-f frequencies. However, it is useful for many applications in TV work such as signal tracing in the horizontal and vertical deflection circuits, sync and video amplifiers and as an alignment indicator.

Ready For Color

The Supreme Model 660 Oscilloscope is a more elaborate instrument which is used in many laboratories and larger service shops. This is an ideal scope for TV as it has a flat frequency response within plus or minus 2 db from 5 cycles to 5 mc. A service technician who has a Model 660 is already "fixed up" for color TV. With this scope you can signal trace the 3.58 mc burst signal on the back porch of the horizontal blanking pulse. Also, the true waveforms of complex voltages can be seen and accurate peak-to-peak measurements made.

(Continued on back)

DANGER! LOWER TV SET PRICES

Adequate Charges Must Be Maintained

Used TV sets are now selling for as little as \$50.00. The price of new sets is continually dropping as manufacturers find more ways of cutting costs. Many "old timers" remember the late 30's when low-priced AC-DC radios put servicing on a very low economic level. The same thing could happen again.

Profit Essential

In spite of the low cost of some of the sets he is called on to service, the technician must charge an adequate service fee if he is to maintain a satisfactory standard of living, buy the test instruments he needs and be considered an asset to his community. It is suicide for him to lower his service charges. It is better to turn down unprofitable jobs than to lose time and money.

ORDER OVERDUE?

Supreme gives prompt service on orders for accessories and replacement parts for Supreme testers.

All items which we ship via parcel post are insured for your protection. In the event of loss or damage in shipment, a claim must be filed with the post office department within six months from the date of shipment. Otherwise, the claim will not be paid.

If you do not receive your order promptly (or a notice stating that it has been delayed) be sure to let us know.

BE READY FOR THE NEW TUBES

A NEW EDITION OF THE ROLL CHART IS NOW AVAILABLE TO OWNERS OF THE MODELS 589, 589-A, 599, 599-A, 504-A AND 504-B. THE NEW CHART HAS BEEN REVISED TO INCLUDE MANY NEW TYPES INCLUDING SOME SPECIAL TUBES FOR COLOR TV CIRCUITS. USE THE HANDY ORDER FORM BELOW TO OBTAIN PROMPT DELIVERY.

SUPREME TUBE SETTING SERVICE, BOX 9552
GREENWOOD, MISSISSIPPI

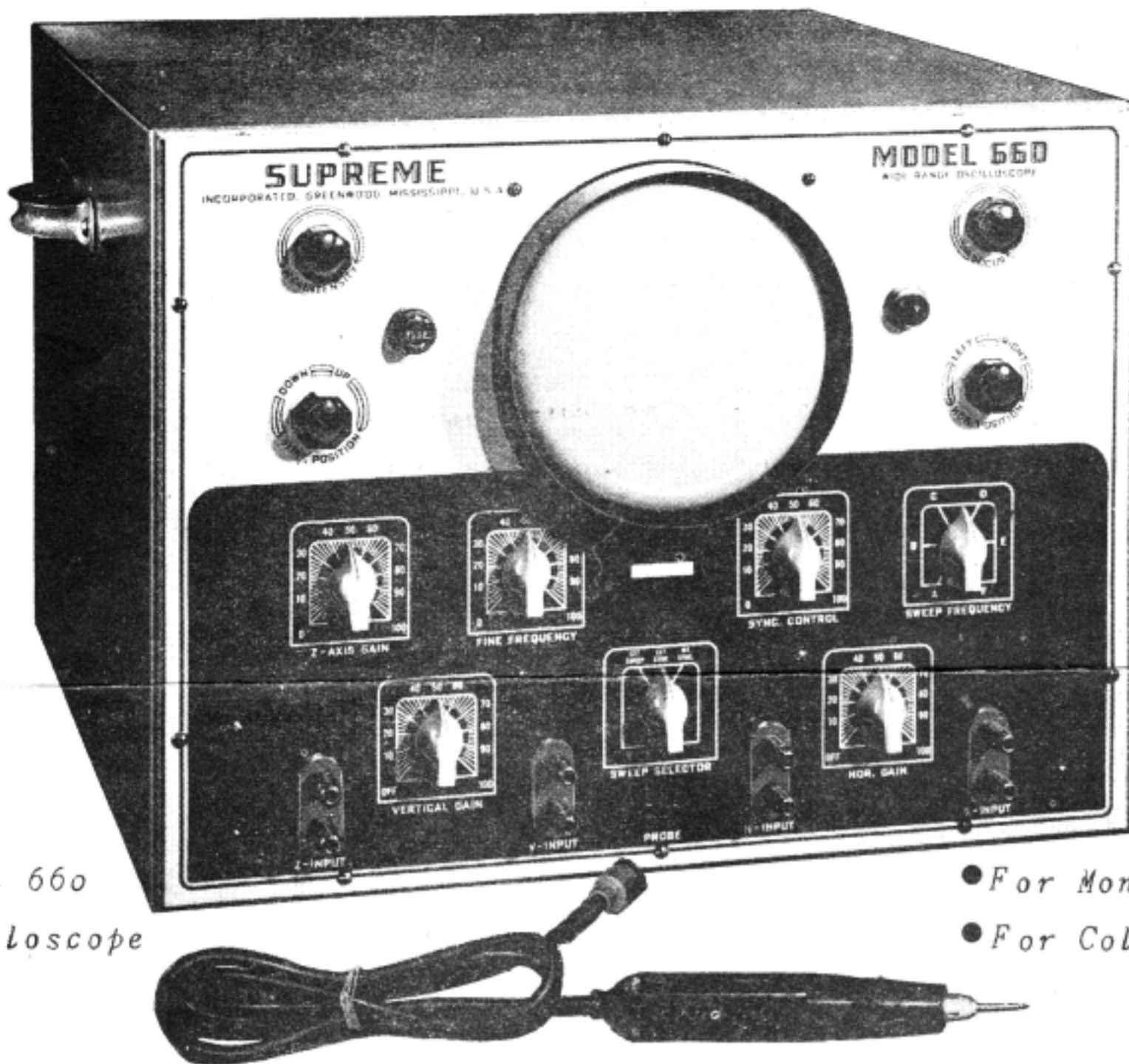
Enclosed is \$1.25. Please forward latest edition of roll chart for my SUPREME MODEL ____ Tube Tester. The number of my old chart is _____

Name _____

Address _____

City _____ State _____

NO C.O.D.'S PLEASE!



Model 660
Oscilloscope

• For Monochrome
• For Color

NEW SETTINGS FOR SUPREME TESTERS

For Models 600 and 616.

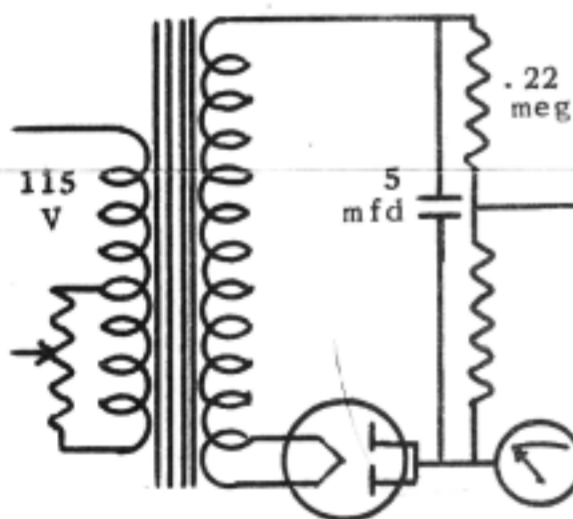
2AF4 (1267)	19	C	3	4	45
2T4 (1267)	18	C	3	4	45
3AL5 (dio)	54	B	3	5	45
3AL5 (dio)	54	B	3	5	14
3AU6	56	B	3	5	47
3AV6	30	C	3	5	2456
3AV6 (dio)	85	B	3	5	124
3BC5 (27)	56	B	3	5	247
3BE6	20	C	3	5	2467
3BE6	18	C	3	5	24
3BN6	35	E	3	5	14
3BZ6	17	C	3	5	24
3CB6	54	B	3	5	24
5AN8	22	C	4	6	358
5AN8	18	C	4	6	235
5AQ5 (17)	15	A	3	6	24
5AV8	22	C	4	6	156
5AV8	17	C	4	6	257
5BK7-A	58	B	4	6	35
5BK7-A	58	B	4	6	58
5J6	55	B	3	6	147
5J6	55	B	3	6	247
5T8	60	B	4	6	1567
5T8 (dio)	55	B	4	6	5678
5T8 (dio)	55	B	4	6	35
5T8 (dio)	55	B	4	6	1578
5U8	56	B	4	6	57
5U8	47	B	4	6	58
5V6	23	C	2	6	78
5X8	56	B	4	6	256
5X8	20	C	4	6	567

For Models 589, 599 & 504-A,B.

2AF4 (1267)	3	3	19	C	45
2T4 (1267)	3	3	18	C	45
3AL5 (dio)	3	4	54	B	45
3AL5 (dio)	3	4	54	B	14
3AU6	3	4	56	B	47
3AV6	3	4	30	C	2456
3AV6 (dio)	3	4	85	B	124
3BC5 (27)	3	4	56	B	247
3BE6	3	4	20	C	2467
3BE6	3	4	18	C	24
3BN6	3	4	54	E	14
3BZ6	3	4	17	C	24
3CB6	3	4	54	B	24
5AN8	4	5	22	C	358
5AN8 (a4X3)	4	5	18	C	235
5AQ5 (17)	3	5	15	A	24
5AV8	4	5	22	C	156
5AV8 (a4X6)	4	5	17	C	257
5BK7-A	4	5	58	B	35
5BK7-A	4	5	58	B	58
5J6	3	5	55	B	147
5J6	3	5	55	B	247
5T8	4	5	60	B	1567
5T8 (dio)	4	5	55	B	5678
5T8 (dio)	4	5	55	B	35
5T8 (dio)	4	5	55	B	1578
5U8 (a4X1)	4	5	56	B	57
5U8	4	5	47	B	58
5V6	2	5	23	C	78
5X8 (a4X1)	4	5	56	B	256
5X8	4	5	20	C	567

LINE ADJUST CALIBRATION

If the meter on your Supreme tube tester cannot be brought to center scale with the "line adjust" control, look for trouble in the power supply. (See simplified circuit below.)



The components to check first are the tube, .5 mfd capacitor and .22 megohm resistor.

The meter should read center scale when the transformer secondary (filament) voltages are correct. This is usually at about 3/4 of maximum rotation on the "line adjust" control.

Except in areas where the line voltage is unusually low, it should not be necessary to turn the "line adjust" control to the extreme clockwise position to bring the meter pointer to center scale.

YOUR 'SCOPE

(Cont'd from other side)

Tops For Radio

The Model 660 is also excellent for radio work. You can connect the vertical input of this scope to an outside antenna and see the modulated carrier of your local radio station. The very high sweep range (up to 150 kc) enables you to set about 8 cycles of sine wave carrier on the screen. Thus, this scope is ideal for signal tracing through any stage of a radio from the antenna to the speaker.

If you have a question relative to specifications or applications of oscilloscopes, write the Service Engineer of Supreme. He will be glad to help you with your problem.

PRICES OF SUPREME 'SCOPES

Model 655 -- \$126.50
Model 660 -- \$287.60

From SUPREME, INCORPORATED
GREENWOOD, MISSISSIPPI

REDER DRUG CO
BLUE RAPIDS KAN

Printed in U.S.A.

Perusing the PAGES

MAGAZINE ARTICLES

Looking For More Help?

Page 26 -- July 1954
TECHNICIAN

"Our Opinion" (Editorial)

Page 6 -- August 1954
SERVICE MANAGEMENT

Louisiana Technicians Fight
"Gyp" Competition

Page 24 -- August 1954
TECHNICIAN

BOOKS

Advanced Television Ser-
vicing Techniques

By RETMA PTC-TS
(A Rider Publication)

Sec. 34.66 P.L.&R.
U.S. POSTAGE
PAID
Greenwood, Miss.
Permit No. 81

RETURN POSTAGE GUARANTEED



Publication Digitized and Provided By

www.StevenJohnson.com

Vintage Schematics, and Publications

Steve's Antique Technology